



AVH8536AIX

36CH 8MP Video Recording
8-Bay Storage
EaZy Networking
12CH AI-based Detection

AI-BASED 8-BAY 36CH H.265 NVR

Features

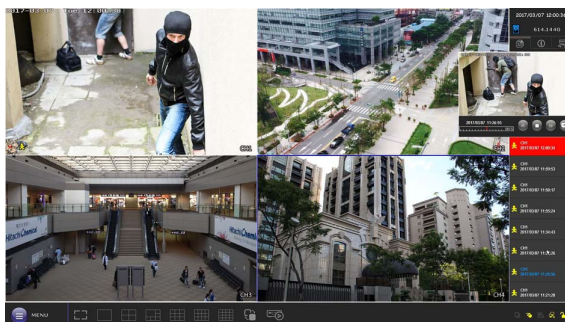
H.265 Compression Technology

With this compression technology, the recording capacity is greatly enhanced as well as bandwidth saving for better efficiency and performance than the systems employing other compression formats



Event Pop-up / Preview

All events are listed on the right panel with corresponding event icons for you to quickly recognize the event type. The most current one will flash to catch your attention. Click one event and you're able to preview the footage with pre-alarm images.

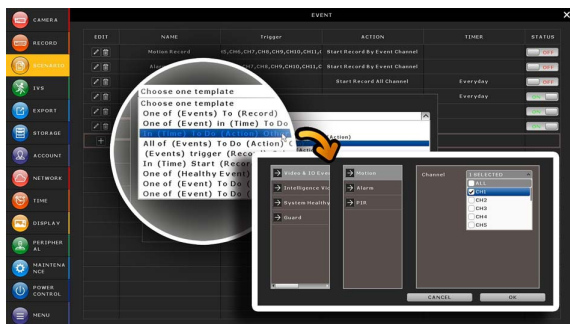


Cloud Service - EaZy Networking

EaZy Networking, the cloud service provided by AVTECH, can be used to simplify the network setup and quickly connect this device to the internet with our free mobile app, EagleEyes.

Alarm Scenario Customization

"Scenario" is a new feature allowing you to customize a series of actions which will be run automatically after the specified event occurs. There are several scenario templates for you to choose when and what to do after a specific event occurs.



AI Implemented on Recorder

The AI-based video detection algorithms are processed at the recorder side, not at the AI-enabled IP camera side or CMS site. Only one AI recorder and any cameras can realize the advanced detection functions to detect humans, vehicles and faces.



Push Video & Push Status - Active Event Notification with EagleEyes App

- Push Video to send instant notifications for an alarm event when an alarm device is connected to the DVR.
- Push Status to send instant notifications for system events, such as video loss or HDD data removal.

8-bay Storage Capacity

To solve the large storage requirement of 4K2K recording, this NVR supports up to 8 hard disks to keep high quality H.265 video data without overwriting data so quickly. A power-saving mechanism is also adopted to reduce power consumption.

Specifications*

Hardware		
.		One LAN port (up to 36 IP cameras)
Video Output**		HDMI 1 / VGA / Composite
Video Output Resolution		HDMI 1: Up to 3840 x 2160 (4K2K) VGA: Up to 1920 x 1080 (Full HD)
Audio I/O		1 in (Mic in) / 1 out (Line out / HDMI)
Alarm I/O		4 in / 1 out
RS485		YES
HDD Storage***		Eight 20TB hard disks
USB Ports		USB 3.0 x 1 / USB 2.0 x 2
Ethernet	LAN port	1000Mbps
	Internet port	1000Mbps
Software		
Video Compression Format		H.265
Audio Compression Format		G711
Live Display Mode	Local	36CH
	Remote	4CH
Playback Display Mode	Local	16CH
	Remote	4CH
Local Single Channel Playback		YES
Record Stream		Dual
Recording Mode		Manual / Event / Alarm / Schedule
Recording Throughput		Up to 1080 FPS @ 3840 x 2160, 300Mbps
Pre-alarm Recording		YES
AI Detection Channel		12 channels
AI Detection Function		Face, human and vehicle detection (Flow Counting, Virtual Fence and Perimeter Intrusion can be further configured when human or vehicle detection is chosen.)
Quick Search		Time / Event
Event Notification		Push Video / Push Status / FTP / E-Mail
Security		Multiple user access levels with password
Multicast		YES
Seamless Recording****		YES
EaZy Networking		YES
Alarm Scenario Setup		YES
Alarm Pop-up & Preview		YES
Free DDNS Service		YES

Specifications*

Network		
Protocols	DDNS, PPPoE, DHCP, NTP, SNTP, TCP/IP, ICMP, SMTP, FTP, HTTP, RTP, RTSP, RTCP, IPv4, UPnP, DNS, UDP, IGMP	
ONVIF Compatible	YES	
Remote Surveillance		
Remote Access	Web browser	Windows Edge, Google Chrome, Mozilla Firefox & Opera on Windows 10 (and later versions) and Google Chrome & Mozilla Firefox on MAC
	PC program	32CH CMS software for Windows OS
	Mobile app	EagleEyes on iOS & Android mobile devices
Max. Online User	80	
General		
Alarm Scenario Setup	YES	
Alarm Pop-up & Preview	YES	
Power Source (±10%)	DC12V / 12.5A	
Power Consumption (±10%)	14W (No hard disks connected)	
Operating Temperature	0°C ~ 40°C (32°F~104°F)	
Operating Humidity	10% ~ 85%	
Dimensions (mm)******	358 x 267 x 152	
Net Weight (kg)	5.8	
Minimum PC Browsing Requirements	<ul style="list-style-type: none"> • Intel core i3 or higher, or equivalent AMD • 2GB RAM • AGP graphics card, Direct Draw, 32MB RAM • Windows 10 and later versions • Windows Edge, Google Chrome, Mozilla Firefox & Opera on Windows 10 (and later versions) 	
Certification	CE / UL (Power Adapter)	

*The specifications are subject to change without notice

** The HDMI 2 port is disabled for this model.

*** HDDs are optional.

**** Available only when the connected cameras are supported

***** Dimensional tolerance: ±5mm

Rear Panel

