



AVH2109AIX

8CH PoE Solution
EaZy Networking
Push Video / Push Status
4CH AI-based Detection

AI-BASED 9CH H.265 NVR w/ PoE

Features

H.265 Compression Technology

With this compression technology, the recording capacity is greatly enhanced as well as bandwidth saving for better efficiency and performance than the systems employing other compression formats

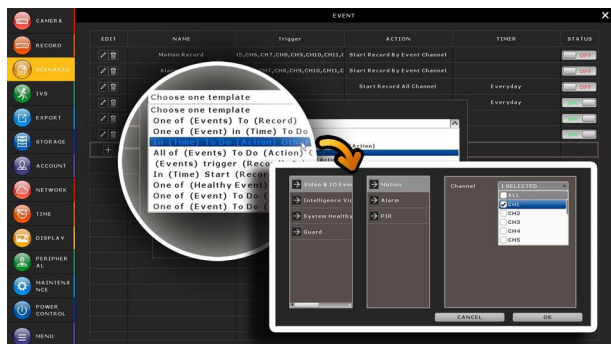


Cloud Service - EaZy Networking*

- EaZy Networking, the cloud service provided by AVTECH, available to connect this device to Internet automatically in three steps with our free mobile app, EagleEyes.
- The "Buddy" feature to share the device access permission to other people.
- Device login / out notifications reported.

Alarm Scenario Customization

"Scenario" is a new feature allowing you to customize a series of actions which will be run automatically after the specified event occurs. There are several scenario templates for you to choose when and what to do after a specific event occurs.



Push Video & Push Status - Active Event Notification with EagleEyes App

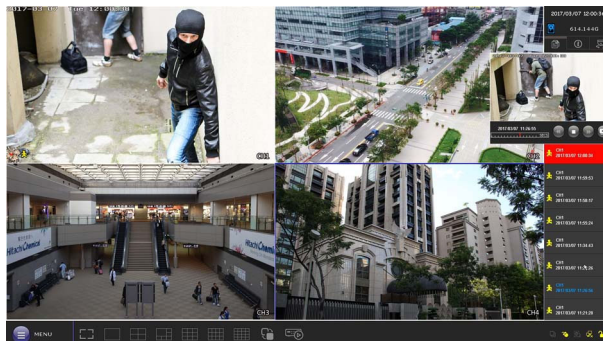
- Push Video to send instant notifications for an alarm event when an alarm device is connected to the recorder.
- Push Status to send instant notifications for system events, such as video loss or HDD data removal.

One Ethernet Cable Solution (POE, Power-over-Ethernet)

Camera power supply & video transmission over one Ethernet cable to eliminate the needs of power adapters for your cameras during the whole HD surveillance system setup.

Event Pop-up / Preview

All events are listed on the right panel with corresponding event icons for you to quickly recognize the event type. The most current one will flash to catch your attention. Click one event and you're able to preview the footage with pre-alarm images.



AI Implemented on Recorder

The AI-based video detection algorithms are processed at the recorder side, not at the AI-enabled IP camera side or CMS site. Only one AI recorder and any cameras can realize the advanced detection functions to detect humans, vehicles and faces.



Specifications*

Hardware		
Video Input	LAN port with PoE x 8 + WAN port x 1	
Video Output	HDMI	YES (4K2K)
	VGA**	YES (720P)
	Composite	YES
Video Output Resolution	Up to 4K2K (3840 x 2160)	
Audio	1 in (mic in) / 1 out	
Alarm I/O	4 in / 1 out	
RS485	YES	
HDD Storage***	Either two 20TB SATA HDD installed in the recorder, or one 20TB SATA HDD installed and a disk array connected to the recorder via the eSATA interface	
USB Port	USB 2.0 x 2	
eSATA Port	Expandable with a SATA to eSATA cable	
Ethernet	LAN port	10/100 Mbps with PoE (IEEE802.3af)
	WAN port	1000 Mbps x 1
Fan	YES	
Software		
Video Compression Format	H.265	
Audio Compression Format	G711	
Live Display Mode	Local	9CH
	Remote	4CH
Playback Display Mode	Local	9CH
	Remote	4CH
Local Single Channel Playback	YES	
Recording Mode	Manual / Event / Alarm / Schedule	
Record Streaming	Dual	
Recording Resolution	270 FPS @ 4K2K (3840 x 2160)	
Recording Throughput	80Mbps	
Pre-alarm Recording	YES	
AI Detection Channel	4 channels	
AI Detection Function	Face, human and vehicle detection (Flow Counting, Virtual Fence and Perimeter Intrusion can be further configured when human or vehicle detection is chosen.)	
Quick Search	Time / Event	
Event Notification	Push Video / Push Status / Video Mail / Message Mail	
Security	Multiple user access levels with password	
Multicast	YES	
Seamless Recording****	YES	
EaZy Networking	YES	
Alarm Scenario Setup	YES	
Alarm Pop-up & Preview	YES	
Free DDNS Service	YES	

Specifications*

Network		
Protocols	DDNS, PPPoE, DHCP, NTP, SNTP, TCP/IP, ICMP, SMTP, FTP, HTTP, RTP, RTSP, RTCP, IPv4, UPnP, DNS, UDP, IGMP	
ONVIF Compatible	YES	
Remote Surveillance		
Remote Access	Web browser	Windows Edge, Google Chrome, Mozilla Firefox & Opera on Windows 10 (and later versions) and Google Chrome & Mozilla Firefox on MAC
	PC program	32CH CMS software for Windows OS
	Mobile app	EagleEyes on iOS & Android mobile devices
Max. Online User	20	
General		
Power Source (±10%)	DC54V / 3.2A	
PoE Power Output	IEEE802.3af, 100W total	
Operating Temperature	0°C ~ 40°C (32°F ~104°F)	
Operating Humidity	10% ~ 85%	
Dimensions (mm)*****	319.5 x 254.9 x 52	
Net Weight (kg)	2	
Minimum PC Browsing Requirements	<ul style="list-style-type: none"> • Intel core i3 or higher, or equivalent AMD • 2GB RAM • AGP graphics card, Direct Draw, 32MB RAM • Windows 10 and later versions • Windows Edge, Google Chrome, Mozilla Firefox & Opera on Windows 10 (and later versions) 	
Optional Peripherals	SATA to eSATA cable	
Certification	CE / UL (Power Adapter)	

*The specifications are subject to change without notice. ** unavailable when the HDMI video display is set to 4K2K. *** HDDs are optional.
 **** Available only when the connected cameras are supported. ***** Dimensional tolerance: ±5mm

Rear Panel

